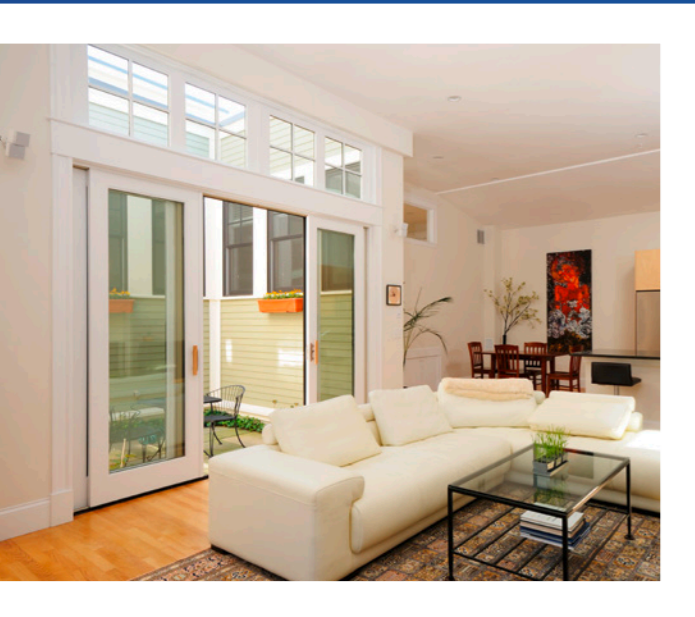


# EKOSOL for any application



## Profile system

- Multi-chamber profiles with a standard installation depth of 70 mm
- Elegant, slightly rounded edges
- Visible surface: 131 mm to 146.5 mm
- General use of metal reinforcements in accordance with VEKA Reinforcement Guidelines

## Heat transfer coefficient

$U_w$  value (window element):  
Up to 1,8 W/(m<sup>2</sup>K) depending on the type of glazing

$U_d$  value (sliding-door element):  
Up to 1,8 W/(m<sup>2</sup>K) depending on the type of glazing

## Let your window expert advise you

Trust is a vital component in any building or renovation project. Contracting a reliable expert is the key to success. As your dedicated and competent VEKA specialists, we have all the answers to any questions

you might have regarding windows and doors. Put your trust in our expertise combined with state-of-the-art, quality-tested window technology.

BR-EKOSOL-04/2016-ENG

# EKOSOL

„More room  
to play!“



## The system for sliding windows and doors from VEKA



The Quality Profile  
★★★★★

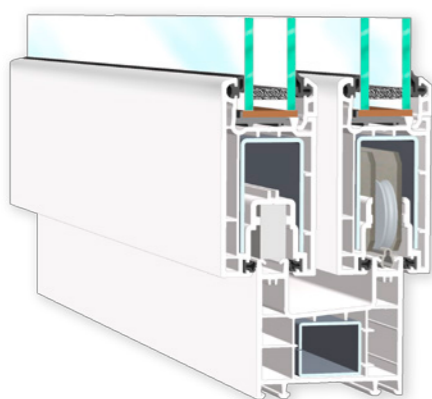


**That's EKOSOL**

- Standard installation depth: 70 mm
- Outstanding VEKA quality
- Elegant, slightly rounded edges
- Generous metal reinforcements

## The practical system for sliding windows and doors in VEKA quality

### EKOSOL



Regardless of whether it be for private homes or public buildings where open windows and doors extending well into the room would be impractical: sliding windows and doors from the high-quality EKOSOL profile system can solve any space problem. Thanks to their durability, ease of maintenance and use and wide range of opening and installation possibilities, they help to create the ultimate in home comfort while providing almost unlimited openness.

**Heat transfer coefficient ( $U_w/U_d$  value)**

- Up to 1,8 W/(m<sup>2</sup>K) depending on the type of glazing

Thanks to its unbeatable value for money, the EKOSOL system from VEKA is the ideal solution for anyone looking to combine space-saving sliding windows and doors with attractive design. With its classic contours and large selection of colours, EKOSOL is a real eye-catcher, while the profiles' incomparable VEKA quality and generous steel reinforcements ensure security, stability and durability.

Multi-chamber profiles with efficient lip seals or optional brush seals provide reliable protection against wind, sand, dust and heat. With its 70 mm of installation depth, outstanding performance characteristics and compatibility not only with all VEKA systems but also with other competitor systems, EKOSOL is perfect for new buildings and renovation work alike.



Regardless of whether the installation situation is ultra-modern or rather classic, sliding windows and doors made from EKOSOL profiles are sure to shine.